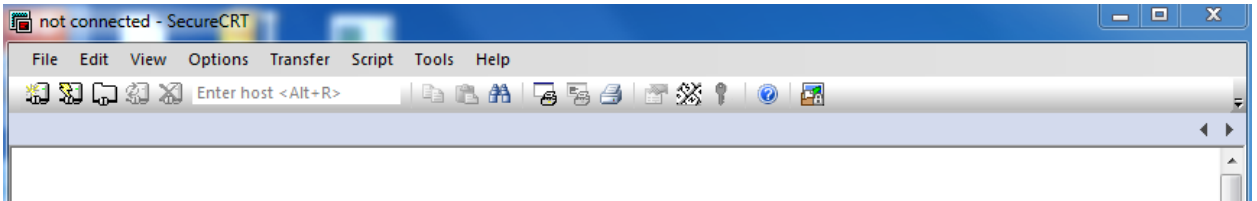


## Using Xmanager with Secure CRT

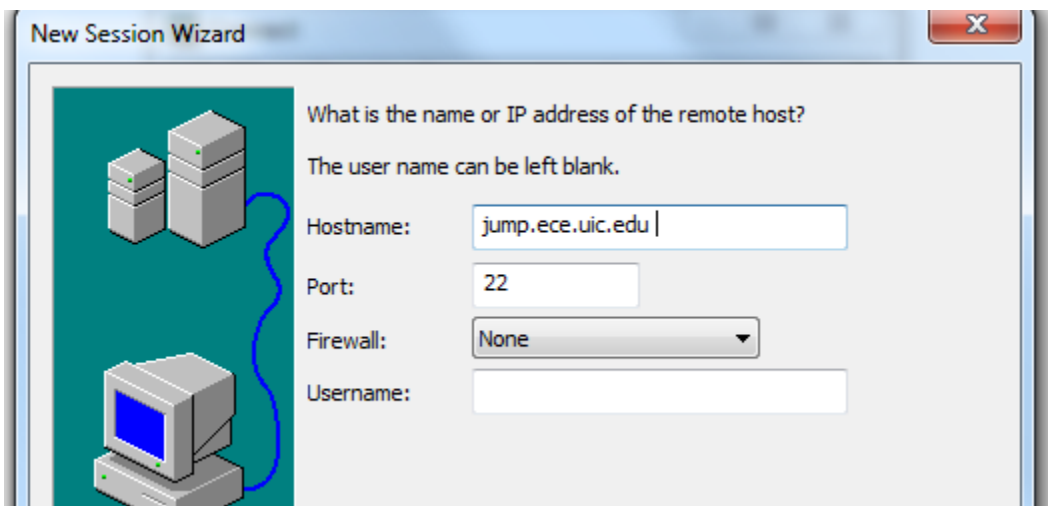
- 1) Go to start menu All Programs and scroll down to Xmanager
- 2) Start Xmanager in passive mode
- 3) Next open Secure CRT
- 4) If connect window does not open click on first icon



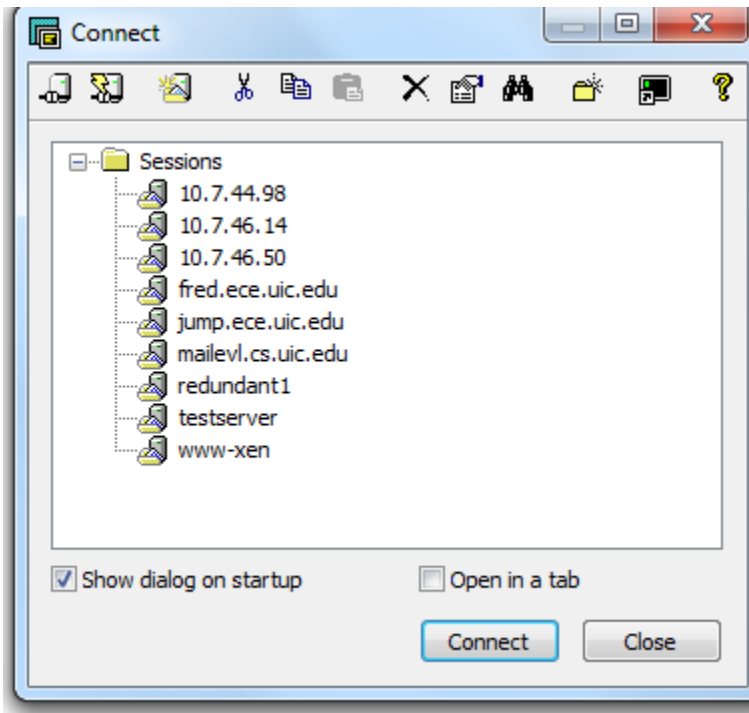
Next click new session



Make sure ssh2 is selected click next



Type in host you would like to connect to and click next (jump.ece.uic.edu or bounce.ece.uic.edu)



To enable X11 forwarding click on the properties button of your newly created session



- In the Properties screen, expand Connection>Port Forwarding and highlight Remote/X11. Select the check box "Forward X11 packets" in the right pane of the window.

